

WELCOME



Acknowledgement of the Kabi Kabi Traditional Owners

The Land and Community Program

Term One 2021





What do you
remember
about Year 7
and Year 8
when you were
at school?

Traditional Classrooms



Points of Difference

@MIC we value...

- Student input and promote a *student-centric learning* environment
- Community meetings
- Micro-economies and community projects
- Students creating their *code of civility for their community*
- *Guiding on the side*
- Creating *authentic learning experiences* that inspire and challenge students both cognitively and physically. These challenges lead to the development of *new skills* and *deeper understanding*.

“To co-create an innovative learning ecosystem that cultivates and harnesses potential.

Meet the Faculty - Advisory Staff



Greg



Natalie



Brandon



Steve

Additional Expert Faculty

Andrew Maitland - Land Manager

Nicole Voevodin- Cash - Visual Arts & Artist

Shannon Green - Music & Musician

Jaclyn Li-Lin - LOTE



Nicole



Andrew

Shannon

Jaclyn



Additional Expert Faculty

Kate Buckland - English & Language Arts



The Land and Community Program

“Work on the land is an introduction both to nature and to civilisation and gives a limitless field for scientific and historical studies.”

Maria Montessori



Wonderful World of Water

Term One, 2021

Plan for Study and Work

1. Quality of Water

- a. Maths
- b. Science
- c. Geography
- d. Technology



Area 1: Quality of Water

Maths, Science, Geography and Technology



What's happening to Eudlo Creek?



Area 1: Quality of Water



Our adolescents will investigate problems facing the Eudlo creek!

Wonderful World of Water

2. Myths & Legends

- a) English
- b) Humanities
- c) Visual Arts



Area 2: Myths and Legends



English:

- *Study of water myths/legends*
- *Creating a myth/legend*
- *Audiobook of created myth/legend*

Wonderful World of Water

3. Water Skills, Jobs, and Personal Fitness

- a) HPE
- b) Business Studies

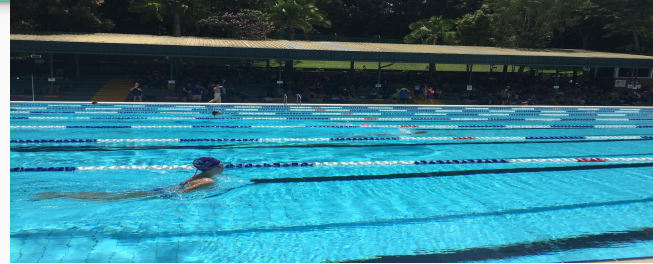


Area 3 : Water skills, Jobs and Personal Fitness

The adolescents will visit Unity Water to look at water treatment and careers in water!

Area 3 : Water skills, Jobs and Personal Fitness

- Adolescents will build a Personal Fitness portfolio
- Adolescents will explore aquatic recreation





Visual Arts

Environmental
Practices with
Teaching Artist
**Nicole
Voevodin-Cash**

Environmental art is a range of artistic practices encompassing both historical (indigenous, cultural) approaches to nature in **art** and more recent **ecological** and politically motivated types of works.

WE'LL CREATE

**Developed, informed,
created and exhibited in
and from the Landscape**

Point of Difference



Collaborative Approach

Investigations conducted at Eudlo creek throughout the unit will provide the raw material for this responsive art work.



Collaborative Approach

Individual work will occur during the term and students will develop a personal visual journal (Blog, sites page) to support all forms of documentation including writing, data collection, photos and calculations etc.



This is a shared assignment which will produce a resolved work.

Collaborative Approach

Students will use their research and writing tasks about water myths. To inform and form the making of a collaborative artwork.



Collaborative Approach



A group of 3 individuals will further develop individual findings into a resolved work to be install their work as a digital installation work within the 'Rainforest Walk'.

'SITE' as Gallery

The **Rainforest Walk** as 'gallery' siting the works in the landscape. With a digital twist....

The works will become an integrated installation within the environment informed through:

- **prior research,**
- **being present in the landscape,**
- **tree selection,**
- **colour,**
- **position,**
- **personal and collective stories.**



Environmental and Digital Technology

Collaborating with OLD (nature) and NEW (technology)

How will this happen?



- Selected TREES will be painted to denote info point (non-toxic) as way-finding and signage
- QR code link added to colour band of tree to access audio stories and visual representations of their mythical creatures.
- Walk this space (rainforest walk) and watch as the gallery 'grows'
- Creating a digital interface as virtual gallery

Learn a new language (LOTE)

- Spanish
- German
- Italian
- French
- Greek
- Mandarin
- Latin



Montessori Difference: Work of the Hand and the Head







“The hand is the instrument of intelligence. The child needs to manipulate objects and to gain experience by touching and handling.”

Maria Montessori





"*Education* should therefore include the two forms of work, *manual and intellectual*, for the same person, and thus make it understood by *practical experience* that these *two kinds complete each other* and are *equally essential* to a *civilised existence*."

Dr Maria Montessori



Community Projects

- Supporting the Micro-economies
 - MIC - RO Greens
 - The Green Market - Farm
 - Food for Thought Cafe
 - The Hive - Bees
- Hawaiian Hale
- Walkways
- Maintaining the Dam Ecosystem
- Creating community facilities



Clubs and Teams

- Skate Club
- Film and TV club
- Cooking & Baking Club
- Debating Team
- Soccer/Football Team
- Tree Shaping Club
- Sewing Club
- Dungeons & Dragons Club
- Minecraft and Construction



The Duke of Edinburgh's International Award



SECTION	BRONZE	SILVER	GOLD
Skills	3 months	6 months	12 months
Physical Recreation	3 months	6 months	12 months
Voluntary Service	3 months	6 months	12 months
Plus for the Major Section	All Participants must complete an additional 3 months in either Physical Recreation, Skills or Voluntary Service.	Participants who have not achieved a Bronze Award must complete an additional 6 months in either Physical Recreation, Skills or Voluntary Service.	Participants who have not achieved a Silver Award must complete an additional 6 months in either Physical Recreation, Skills or Voluntary Service.
Adventurous Journey	2 days + 1 night	3 days + 2 nights	4 days + 3 nights
Note: The Adventurous Journey Section is comprised of 3 parts: preparation and training; at least one Practice Journey; and the Qualifying Journey, with minimum time requirements.			
Gold Residential Project	N/A	N/A	5 days + 4 nights

Musical 2021

Primary and Adolescent Community

Director: Riley Copley

Musical Director: Shannon Green

Choreographer: Libby Hendrie

Set Design: Nicole Voevodin - Cash and Students

Producer: Marina de Jager



General Information

- Google Classroom and Google Suite
- Adolescents require **all the materials on the stationery list**
- Any queries or concerns **please email your advisor**
- Students will be **off campus from time-to-time** frequently for activities (mostly afternoons)
- Adolescents are required to have their **computers everyday**. Please note they **DO NOT** require mobile phones.



Account



Gmail



Drive



Classroom



Docs



Sheets



Slides



Calendar



Meet

	Monday	Tuesday	Wednesday	Thursday	Friday	
8:15 AM	Morning Advisory	Morning Advisory	Morning Advisory	Morning Advisory	Morning Advisory	
8:30 AM	Group 1 - Nat	Community Projects - Brandon, Sarah, Caley, Andrew, Nicole	Micro-economy (Production & Exchange) - NC, SL, GC, BH, ST, CR, AM, NVC	Group 3 - Nat	Group 3 - Jaclyn	
8:45 AM	Group 2 - Greg			Group 1 - Greg	Group 1 - Greg	
9:00 AM	Group 3 - Kate			Group 2 - Kate	Group 2 - Brandon	
9:15 AM	Group 2 - Nat			Group 2 - Steve	Group 2 - Jaclyn	
9:30 AM	Group 3 - Greg			Group 1 - Greg	Group 1 - Kate	
9:45 AM	Group 1 - Kate			Group 3 - Kate	Group 3 - Brandon	
10:00 AM	Morning Tea - AM, BL	Morning Tea - BH, NEW	Morning Tea - SL, GC	Morning Tea - GC, BL	Morning Tea - BH, Jaclyn	
10:15 AM	Group 1 - Sean	Group 3 - Sean	Community Meeting - SL, GC, BH, ST, CR, AM	Group 3 - Greg	Group 1 - Jaclyn	
10:30 AM	Group 2 - Kate	Group 1 - Kate		Group 1 - Sean	Group 2 - Greg	
10:45 AM	Group 3 - Nicole	Group 2 - Nicole		Group 2 - Kate	Group 3 - Kate	
11:00 AM	Group 2 - Sean	Group 1 - Brandon	Community Activity - NC, SL, GC, BH, ST	Group 2 - Greg	Advisor Weekly Conferences - SL, GC, BH	
11:15 AM	Group 3 - Kate	Group 2 - Sean		Group 3 - Sean		
11:30 AM	Group 1 - Nicole	Group 3 - Steve		Group 1 - Steve		
11:45 AM	Advisory LOTE - NC, GC, BH	Advisory LOTE - SL, GC, BH	Advisory - SL, NC, GC, BH	Advisory - SL, NC, GC, BH		
12:00 PM						
12:15 PM	Formal Lunch - NC, SL, GC, BH	Formal Lunch - NC, GC, BH	Formal Lunch - NC, SL, GC, BH	Formal Lunch - NC, GC, BH	Formal Lunch - SL, GC, BH	
12:30 PM						
12:45 PM	Play / Sport - Chiray, Andrew, Steve	Play / Sport - Andrew, Nicole, Greg	Play / Sport - AM, Kate, NVC	Play / Sport - Jaclyn, Andrew	Play / Sport - Andrew, Steve	
1:00 PM						
1:15 PM						
1:30 PM	Practical Work - Greg, Brandon, Andrew	Practical Work - Nat, Brandon, Andrew	Clubs and Teams - SL, GC, BH, ST, CR, AM, NVC	Practical Work - Greg, Brandon, Andrew	Community Projects - SL, GC, ST, CR, AM	
1:45 PM						
2:00 PM						
2:15 PM						
2:30 PM						
2:45 PM						
3:00 PM	Care of Environment	Care of Environment	Care of Environment	Care of Environment	Care of Environment	
3:15 PM		Extended: Project Support Session - Caley, Sarah	Extended: Clubs and Teams - SL, GC, Kate, AM			
3:30 PM						
3:45 PM						
4:00 PM						
4:15 PM						



Questions?

Thank you

It is our pleasure to take you on brief orientation of our learning environments.